

SureServo™ AC SERVO SYSTEMS

SureServo Pro™ configuration software

SureServo Pro is the configuration software for the SureServo drives. With SureServo installed, the personal computer may be directly connected to the servo drive's serial port via the PC's RS-232 serial port. A six-foot configuration cable (SVC-PCCFG-CBL, \$19) is available to make the connection between the drive serial port and PC DB-9 serial port simple. A 3-foot cable (SVC-MDCOM-CBL, \$14) is available to facilitate connection between the drive serial port and host controllers with an RS-485 multi-drop serial link.

Note: Use our USB-RS232 converter cable in conjunction with the SVC-PCCFG-CBL cable on PCs having only USB ports.

Features

- Quick Start - The basic set-up when you have limited time and just want to get up and running ASAP.
- Maintenance keypad allows the user to operate the servo system from the PC. This is a great aid during start-up to allow the servo to perform some basic motion and to check the I/O.
- Detailed - The complete set-up for all the drive parameters
- Tune and check the servo response live using the scope feature.
- Upload and download the drive set-up. Save the drive set-up as a file for future use.
- Edit the drive set-up
- View all drive faults
- Trend drive variables in real time

System Requirements

- Windows 2000, XP Pro
- 24 MB of RAM
- 16 MB hard disk
- RS-232 serial port or USB port
- Internet Explorer 4.0 or higher (for HTML help support)

Product	Price	Description
SV-PRO	X	SureServo Pro configuration software for use with all SureServo servo systems. FREE download from www.sureservo.com or www.automationdirect.com websites.
SV-PRO	X	CD with SureServo Pro configuration software
SVC-PCCFG-CBL	X	Six-foot RS-232 communications cable; connects servo drive serial port to PC DB-9 serial port.
SVC-MDCOM-CBL	X	Three-foot RS-422/485 communications cable; connects servo drive serial port to host controller in multidrop networks.
USB-RS232	X	USB-to-RS232 converter



Servo Drive to PC Cable (RS-232 Serial Port)

SVC-PCCFG-CBL
\$19.00



Servo Drive to Multi-Drop Host Controller (RS-485)

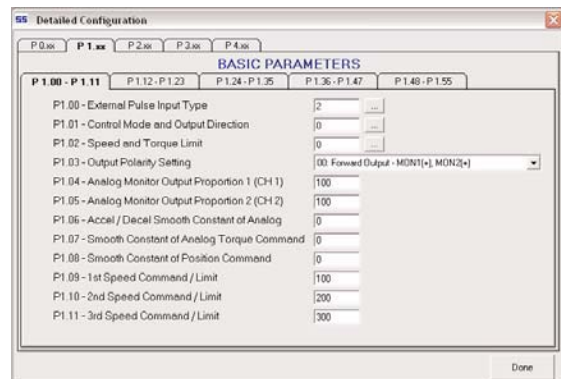
SVC-MDCOM-CBL
\$14.00

Parameter views

The SureServo Pro configuration tool logically organizes over 165 servo drive parameters into five tabbed groups. Each parameter has a factory default that usually allows the servo to run “out-of-the-box”.

The parameters can be easily changed with available options or setting ranges displayed. Tuning modes and parameters can also be changed using SureServo Pro. After the parameters have been defined, the complete set-up can be stored and archived. Drive configurations can be uploaded, edited, saved, and downloaded as often as necessary.

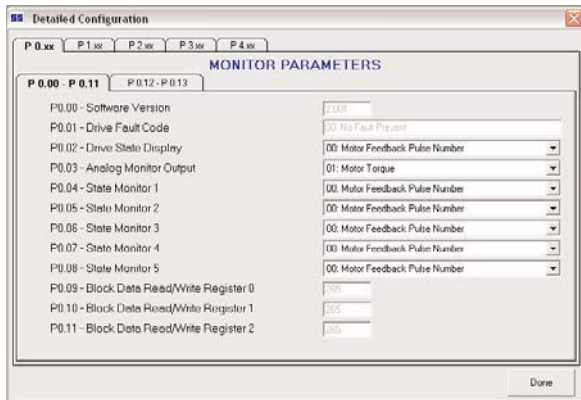
Parameter View Example Screen - Basic Parameters



SureServo™ AC SERVO SYSTEMS

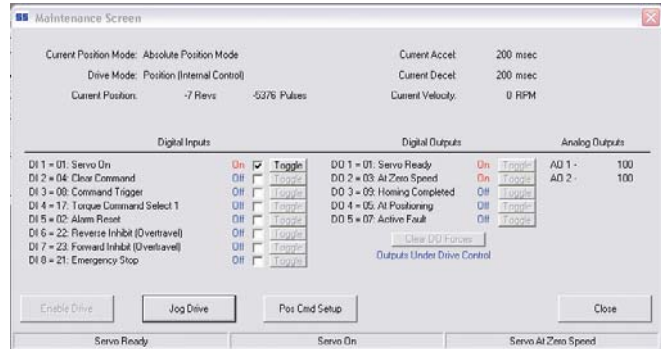
SureServo Pro™ configuration software - Parameter views (continued)

Parameter View Example Screen - Monitor Parameters

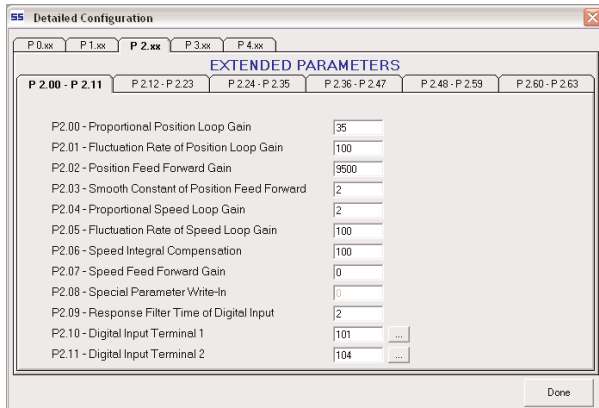


Maintenance screen

A maintenance keypad allows the user to operate the servo system from the PC. This is a great aid during start-up to allow the servo to perform some basic motion and to check the I/O.

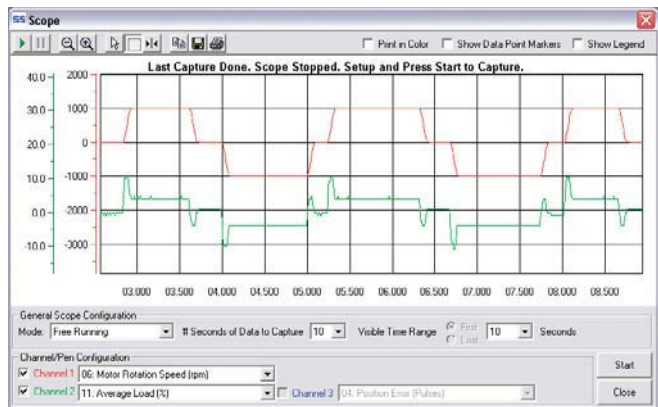


Parameter View Example Screen - Extended Parameters



Scope

SureServo Pro™ includes a powerful scope function that allows the user to have as many as three channels of data displayed simultaneously. Each channel has a drop-down table to select the data to be displayed. The scope also has a trigger mode and timebase selection.



Parameter View Example Screen - Communication Parameters

