

SureServo™ AC Servo System Software

SureServo Pro configuration software

SureServo Pro is an optional configuration software package for the SureServo drives. With SureServo Pro installed, the personal computer may be directly connected to the servo drive's serial port via the PC's RS-232 serial port*. A six-foot configuration cable (SVC-PCCFG-CBL) is available to make the connection between the drive serial port and PC DB-9 serial port simple. A 3-foot cable (SVC-MDCOM-CBL) is available to facilitate connection between the drive serial port and host controllers with an RS-485 multi-drop serial link.

*Note: Use our USB-RS232 converter cable in conjunction with the SVC-PCCFG-CBL cable on PCs having only USB ports.

Features

- Quick Start - The basic setup when you have limited time and just want to get up and running ASAP.
- Maintenance keypad allows the user to operate the servo system from the PC. This is a great aid during start-up to allow the servo to perform some basic motion and to check the I/O.
- Detailed - The complete setup for all the drive parameters
- Tune and check the servo response live using the scope feature.
- Upload and download the drive setup. Save the drive setup as a file for future use.
- Edit the drive setup
- View all drive faults
- Trend drive variables in real time



Servo Drive to
PC Cable
(RS-232 Serial Port)

SVC-PCCFG-CBL

<--->



Servo Drive to
Multi-Drop Host
Controller
(RS-485)

SVC-MDCOM-CBL

<--->

System Requirements

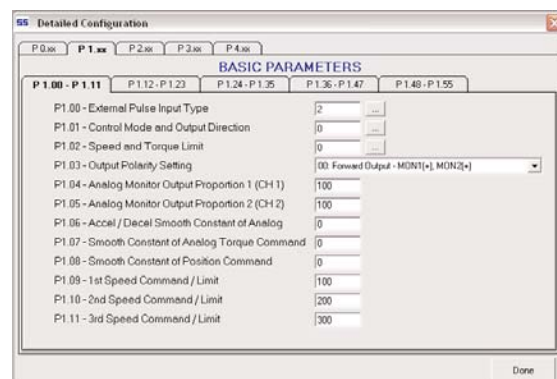
- Windows 2000, XP Pro
- 24 MB of RAM
- 16 MB hard disk
- RS-232 serial port or USB port
- Internet Explorer 4.0 or higher (for HTML help support)

Parameter views

The SureServo Pro configuration tool logically organizes over 165 servo drive parameters into five tabbed groups. Each parameter has a factory default that usually allows the servo to run "out-of-the-box".

The parameters can be easily changed with available options or setting ranges displayed. Tuning modes and parameters can also be changed using SureServo Pro. After the parameters have been defined, the complete setup can be stored and archived. Drive configurations can be uploaded, edited, saved, and downloaded as often as necessary.

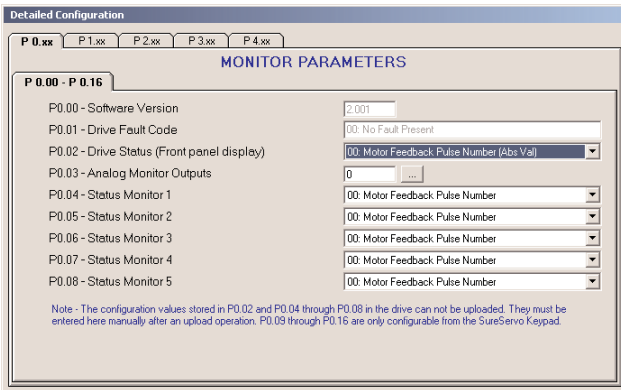
Parameter View Example Screen - Basic Parameters



Product	Price	Description
SV-PRO	Free	SureServo Pro configuration software for use with all SureServo servo systems. FREE download from www.sureservo.com or www.automationdirect.com websites.
SV-PRO	<--->	CD with SureServo Pro configuration software
SVC-PCCFG-CBL	<--->	Six-foot RS-232 communications cable; connects servo drive serial port to PC DB-9 serial port.
SVC-MDCOM-CBL	<--->	Three-foot RS-422/485 communications cable; connects servo drive serial port to host controller in multidrop networks.
USB-RS232	<--->	USB-to-RS232 converter

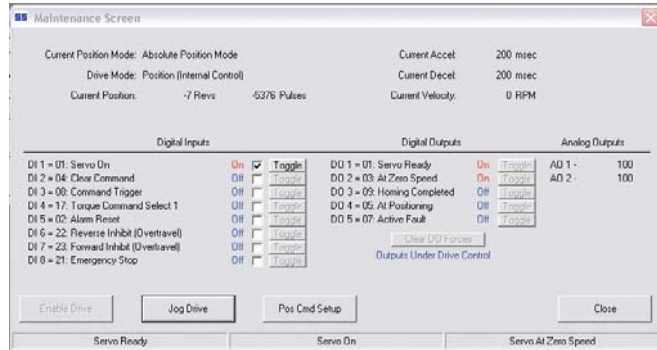
SureServo Pro configuration software - Parameter views (continued)

Parameter View Example Screen - Monitor Parameters

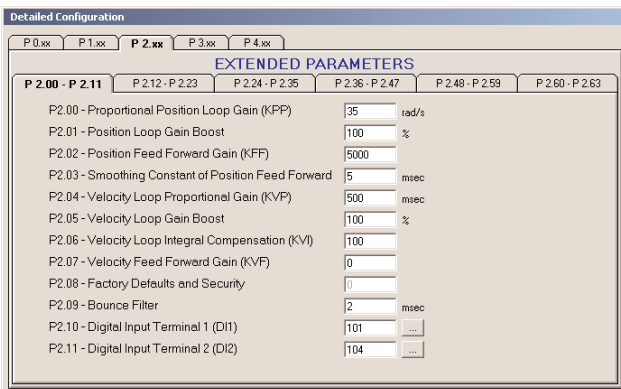


Maintenance screen

A maintenance keypad allows the user to operate the servo system from the PC. This is a great aid during start-up to allow the servo to perform some basic motion and to check the I/O.

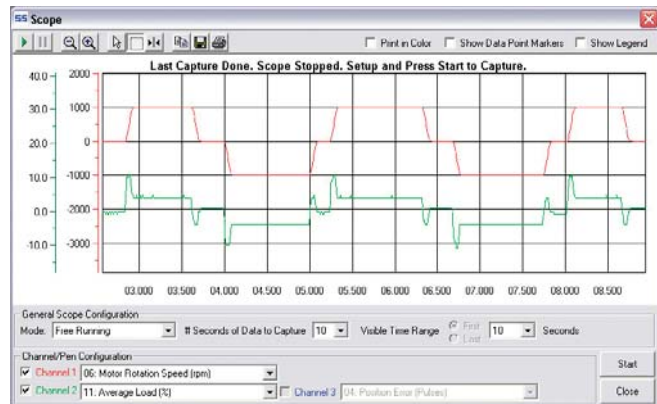


Parameter View Example Screen - Extended Parameters

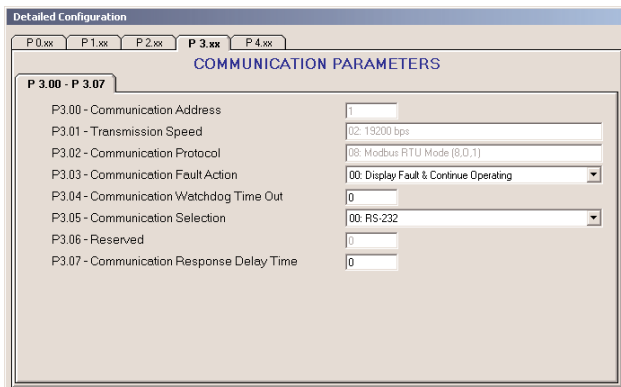


Scope

SureServo Pro includes a powerful scope function that allows the user to have as many as three channels of data displayed simultaneously. Each channel has a drop-down table to select the data to be displayed. The scope also has a trigger mode and timebase selection.



Parameter View Example Screen - Communication Parameters



- Automation Direct
- PLC Overview
- DL05/06 PLC
- DL105 PLC
- DL205 PLC
- DL305 PLC
- DL405 PLC
- Field I/O
- Software
- C-more HMIs
- Other HMI
- AC Drives
- Motors
- Steppers/Servos
- Motor Controls
- Proximity Sensors
- Photo Sensors
- Limit Switches
- Encoders
- Pushbuttons/Lights
- Process
- Relays/Timers
- Comm.
- TB's & Wiring
- Power
- Enclosures
- Appendix
- Part Index