

# THREE PC CONTROL SOLUTIONS FROM THINK & DO



Supports Windows NT, 2000 and XP  
Now with Visio 2002

## Think & Do Studio

- 1) Studio Development/run-time license (PC-ENT-SDD-USB) **Check price list**
- Runtime licenses
- 2) Studio Runtime License (PC-ENT-SDR-USB) **Check price list**
- 3) Remote Screen Node (PC-ENT-SRN-USB) **Check price list**

### Includes:

- Advanced Visio graphics
- Flowchart logic
- Superior HMI features
- Easy SQL interface
- Linked flowchart libraries
- Remote screen development
- Importing screens
- Project Sync, multi-user development environment support
- Integrated serial communication
- MODBUS TCP, MODBUS RTU and MODBUS Plus Support
- Integrated motion control
- Integrated vision control
- PID process control (64 loops)
- Powerful debugging tools
- Offline logic testing
- Common database for HMI, logic and motion
- Productivity analysis tools
- WinPLC support
- EZTouch/EZText support
- Supports Windows NT, 2000 and XP

## Choose Studio when you need:

1. to communicate to a SQL database
2. a superior HMI with animation and advanced Visio graphics
3. multiple developers on same projects or sharing flowcharts on many projects

## System requirements:

**Recommended:**  
700+MHz PIII CPU, 256 MB RAM, 32 MB VRAM, 625 MB(NT)/2.56 GB (W2K) UDMA/SCSI HDD [560MB (additional 180 MB during install) for Studio & Visio, not including OS]  
**Minimum:**  
128 MB RAM, 4 MB VRAM



Completely compatible with original Think&Do Development Software applications  
Supports Windows NT, 2000 and XP

## Think & Do Live!

Development/run-time license (PC-ENT-LIVE) **Check price list**  
WinPLC programming pack (HMI creator and external I/O drivers not incl.) (PC-WPLC-LIVE) **Check price list**

### Includes:

- Flowchart logic
- HMI creator
- Reuseable subcharts
- Integrated serial communication
- Integrated motion control
- OPC Client and Server
- MODBUS TCP & MODBUS RTU Support
- PID process control (64 loops)
- Powerful debugging tools
- Offline logic testing
- Common database for HMI, logic and motion
- Productivity Analysis tools
- WinPLC support
- EZTouch/EZText support
- Supports Windows NT, 2000 and XP

## Choose Live! when:

- 1) HMI requirements are moderate
- 2) No SQL is required
- 3) Projects are created by a single developer
- 4) Costs must be minimal

## System requirements:

Pentium 133 MHz CPU, 2 MB VRAM, 64 MB (32 MB min with NT) RAM, 500 MB(NT)/2.31 GB (W2K) UDMA/SCSI HDD [300 MB (additional 130MB during install) for Live!, not including OS]



The WinPLC is our lowest cost PC control solution

## The WinPLC, a hybrid PC/PLC solution

The WinPLC is a truly unique hybrid solution providing Think & Do PC control programming benefits on a PLC-style device. Develop applications with either Think & Do Studio or Think&Do Live! and download them to the WinPLC.

Use a WinPLC when you need:

1. The advantages of PC control: complex math, data manipulation and connectivity
2. A PLC's rugged industrial form, non-volatile memory and standard PLC I/O

Or when:

1. A standard OI will suffice for your HMI\*
2. You don't need a full power or priced PC

### WinPLC CPU Modules

For both Think & Do Studio and Think & Do Live!

WPLC	Memory	Price
H2-WPLC2-EN	4 MB ROM/2 MB RAM	Check
H2-WPLC3-EN	8 MB ROM/8 MB RAM	Check

## Think & Do Live! for WinPLC Programming Pack (PC-WPLC-LIVE)

NEW! For just \$695.00, this package gives you just the programming features needed for the WinPLC at a low price. Includes flowchart logic, reusable subcharts, PID functions, serial drivers, MODBUS TCP/IP and a free OPC/DDE server.

## Think & Do DataPak (PC-ENT-DAP)

Think & Do Data Acquisition Pack toolkit enables programmers to create applications that acquire real-time data from an runtime system. Interfaces include OPC, DDE, and VB/C++ programming control. For the WinPLC (or other CE-based platform), this kit allows monitoring, starting/stopping a station, and up/downloading existing project files. No runtime licenses required. The PC-ENT-DAP is compatible with all versions of Think & Do Studio, Think & Do Live!, and Think & Do version 5.2 or later. See <http://www.phoenix.com/software> for more details

SOFTWARE

# PC CONTROL: THINK & DO STUDIO



Think & Do Studio is a comprehensive control and Human Machine Interface (HMI) development tool powered by Visio. A common tag database and rich development tools separate Studio from any other automation software on the market. Studio, based on Microsoft Visio 2002, contains three key components:

## 1. Studio Control Logic

A flowchart development tool for fast, intuitive control logic. The Studio Control Logic run-time engine executes the flowcharts on Windows XP/2000/NT or Windows CE platforms (such as the AUTOMATIONDIRECT WinPLC and the CECPL panels from Phoenix Contact).

## 2. Studio HMI

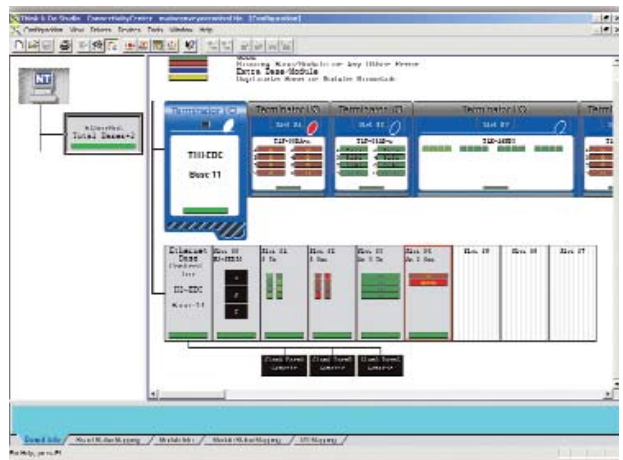
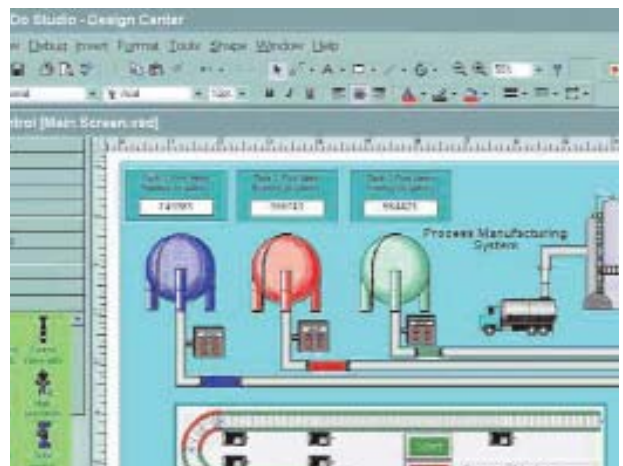
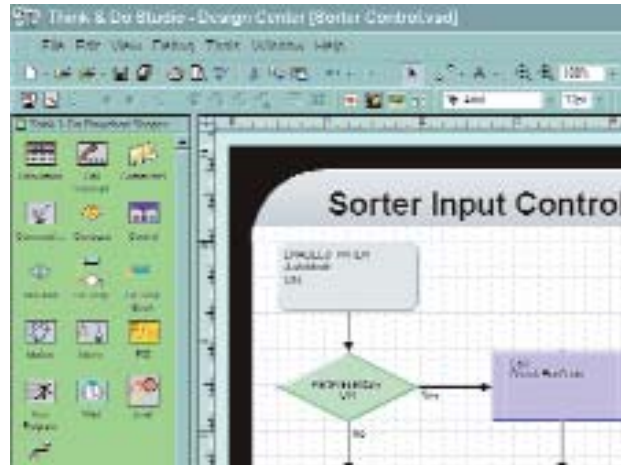
A full-featured HMI development tool that also utilizes the power of Visio to create rich, data-powered screens, graphics and operator interface panels, with the same tag database used in the Control Logic component. Studio now includes over 3500 smart shapes in 77 stencils with tools to help locate the shape you want. Universally display buttons or indicators across all HMI screens using background animations. Add Think & Do Remote Screen Node (PC-ENT-SRN) and turn a PC networked to the controller PC into a remote HMI.

## 3. Studio Connectivity Center

A sophisticated network configuration and management tool that allows you to easily identify and instantly connect to system hardware.

- Re-use flowcharts across many projects from flowchart libraries with version control
- Add remote HMI screens anywhere on your network\*
- Over 3,500 new or improved smart shapes in HMI stencils
- Faster development with accelerated project builds
- Support screen background animations
- Supports SQL arrays

\*Remote PCs require Remote Screen Node (PC-ENT-SRN) package



# PC CONTROL: THINK & DO STUDIO



Supports Windows NT, 2000 and XP,  
with Visio

Powered by



## Think & Do Studio

- 1) Studio Development/Run-time License (PC-ENT-SDD-USB)
- Runtime license
- 2) Studio Run-time License (PC-ENT-SDR-USB)
- 3) Remote Screen Node(PC-ENT-SRN-USB)

Our customers report they have reduced their development time by 30-70% when compared to traditional solutions.

### Think & Do Studio products:

- 1) Think & Do Studio Development & Runtime License (PC-ENT-SDD):  
The complete development product. It includes a Studio development, runtime and Screen Node license. Use this license to develop or modify an Think & Do Studio project on a PC or WinPLC. A development station can run not only the control portion of the project but also any remote HMI screens developed for the project.
- 2) Think & Do Studio Run-time License (PC-ENT-SDR):  
A run-time-only license for operating systems. Once a project has been developed, the run-time license is required for each PC acting as a controller with the project. A run-time station can run local HMI screens but not those designated as remote screens. Stacking a development parallel port key on a run-time key will allow complete development capabilities for modifications/debugging on a run-time-only PC controller.

PC-ENT-SDR-E: Think & Do Studio Run-time License with 1-year ESS (Extended Service Subscription).

- 3) Think & Do Studio Remote Screen Node (PC-ENT-SRN):  
Runtime License for remote HMI screens. Remote screens are developed under Think & Do Studio (PC-ENT-SDD). This license allows one PC to attach across a LAN to the remote screens from one or more Studio projects running on a PC or WinPLC. Remote screens may be identical copies of local screens or entirely new HMI screens.

PC-ENT-SRN-E: Think & Do Studio Remote Screen Node with 1-year ESS (Extended Service Subscription).

### Think & Do Studio Features:

#### Enhanced from

#### Think & Do Live!

- Superior HMI features — now a best-in-class HMI creator
- SQL Interface — easy, direct ODBC communication integration
- Linked flowchart libraries
- Remote screen Development
- Includes screen Node Runtime License\*
- Importing screens
- Project Sync, multi-user development environment support
- MODBUS Plus, MODBUS TCP and MODBUS RTU communication
- Integrated vision control
- Context sensitive Help

\*Remote Screen Node (PC-ENT-SRN) required on each remote HMI PC.

#### Retained from

#### Think & Do Live!

- Common database for HMI, logic and motion
- Integrated motion control — support for multiple motion vendors
- Powerful debugging tools — debug your program in real-time
- Offline logic testing — debug your logic wherever you are
- Integrated serial communication — built-in serial block easily captures serial data
- Supports Fieldbus I/O using Ethernet, MODBUS TCP, MODBUS RTU, DeviceNet, Profibus and more
- PID (64 loops) — easy fill-in-the-blank loop control
- Productivity analysis tools — easy tools to improve your profitability
- Develop unlimited applications for the WinPLC
- EZTouch/EZText support
- Includes Runtime License

### Think & Do Studio system requirements:

#### Recommended:

700+MHz PIII CPU, 256 MB RAM, 32 MB VRAM, 625 MB(NT)/2.56 GB (W2K) UDMA/SCSI HDD [560 MB (Studio & Visio), 740 MB (for install) not including OS]

#### Minimum:

128 MB RAM, 4 MB VRAM

All Studio packages include a USB port hardware key.

Let Phoenix Contact show you how Studio can work for you.

Call them at 1-800-PC CNTRL, or visit their Web site at [www.phoenixcon.com/software](http://www.phoenixcon.com/software) for application testimonials and more detailed product information.

For details on product support and upgrades, check out

Extended Support Subscription (ESS) at <http://www.phoenixcon.com/software>